



# CABINET VISION

## x2D CAD

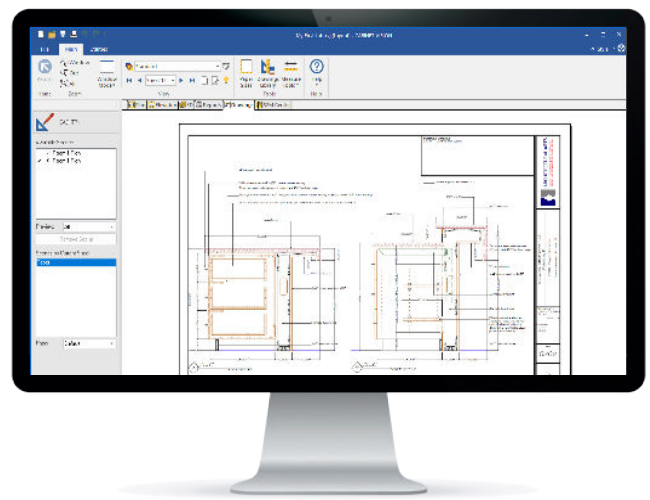
2D CAD functionality ideal for architectural submittals and shop drawings



Creating accurately annotated drawings with the x2D CAD multiplier makes it simpler to communicate design intent to architects and contractors. x2D CAD comes with a host of tools and capabilities, including the automatic updating of part information from the live drawing.

### Key Features

- Plan and assembly cross section views
- Custom view layers and dimensions styles
- Save drawing scenes to a separate file
- Live drawing scenes
- User defined drawing library
- Assembly leaders
- Flip, mirror, rotate and trim 2D CAD objects
- Scale and stretch 2D CAD objects
- Offset CAD objects
- CAD saved with assemblies
- Create live data tables



## We are here for you!

Our customer service representatives and support technicians are on hand to help you become more successful. If you have any questions or requests, please contact us.

**Telephone:** +64 (7) 392 1001

**Email:** [info@joineryit.co.nz](mailto:info@joineryit.co.nz)

**eSupport:** [esupport.ps.hexagonmi.com](mailto:esupport.ps.hexagonmi.com)

**Customer Portal:** [www.customers.ps.hexagonmi.com](http://www.customers.ps.hexagonmi.com)

| Visit [jit2022.nz](http://jit2022.nz)