



CABINET VISION

xCRM

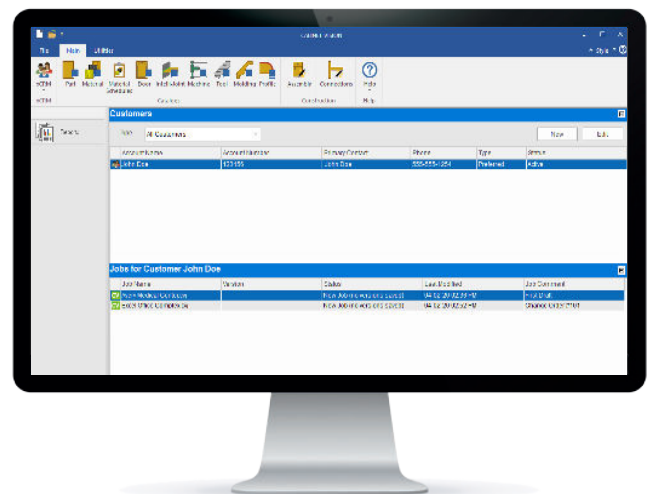
Managing business seamlessly with customers, suppliers and contractors



The xCRM multiplier makes it easy for you to create and manage your customer contact lists and related jobs. With xCRM it is simple to seamlessly track revisions to customers' jobs, ensuring final products accurately match your customers' expectations while saving time on searches. xCRM's centralised interface allows you and your team to view and access the CABINET VISION jobs you are currently working on so you can deliver projects on time. It is also a powerful tool for sub-contractors who need to track and deliver multiple projects for contractors.

Key Features

- Manage jobs by designer/engineer
- Manage jobs by customer
- Contact management (suppliers, customers, vendors, contractors)
- Contact reports
- Job revision tracking



We are here for you!

Our customer service representatives and support technicians are on hand to help you become more successful. If you have any questions or requests, please contact us.

Telephone: +64 (7) 392 1001

Email: info@joineryit.co.nz

eSupport: esupport.ps.hexagonmi.com

Customer Portal: www.customers.ps.hexagonmi.com

| Visit jit2022.nz