



# CABINET VISION

## xOptimizer

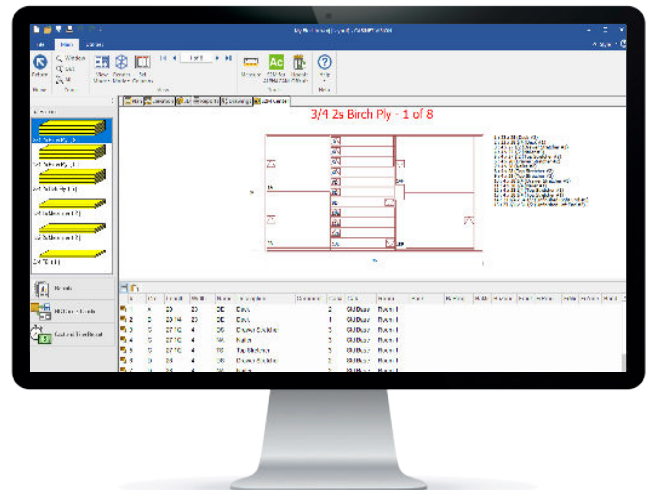
### xOptimizer maximises panel saw yield

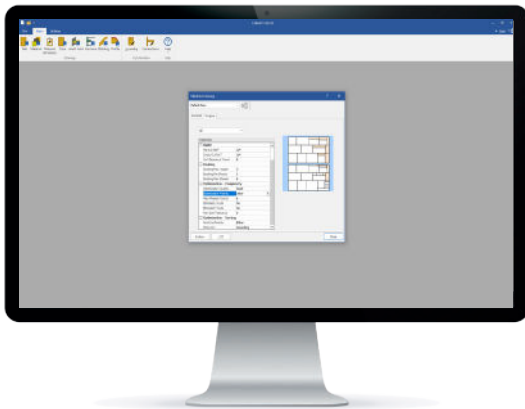
The xOptimizer multiplier is ideal if you are seeking to maximise material yield and reduce waste. It also increases output by eliminating the need to calculate patterns manually. Fully integrated with CABINET VISION, it allows you to quickly and easily convert cut lists into patterns for import directly to an NC panel saw (with the +Saw addition) or to create printed patterns for a manual sawyer. With built-in Offcut Management, the system will instruct the sawyer which offcuts to use from job to job, maximising the use of material.



#### Key Features

- Pattern diagram print outs
- Offcut manager
- Multiple sheet size definition for a single material
- Automatically use larger sheet sizes for oversized parts
- Cost and time report
- Send optimised sheet to the CABINET VISION drawing pages





### +Saw

CABINET VISION has been outputting to panel saws for nearly 30 years. As a result, +Saw can generate output for nearly every NC saw on the market and we use our expertise to develop links for new saws as they are commercialised.



## We are here for you!

Our customer service representatives and support technicians are on hand to help you become more successful. If you have any questions or requests, please contact us.

**Telephone:** +64 (7) 392 1001

**Email:** [info@joineryit.co.nz](mailto:info@joineryit.co.nz)

**eSupport:** [esupport.ps.hexagonmi.com](mailto:esupport.ps.hexagonmi.com)

**Customer Portal:** [www.customers.ps.hexagonmi.com](http://www.customers.ps.hexagonmi.com)

| Visit [jit2022.nz](http://jit2022.nz)